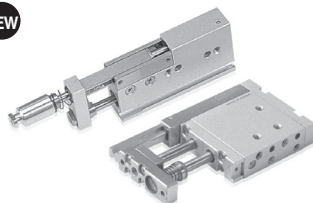


# PPU Series

## Features

NEW



- Miniature slim cylinder, which is combined with 1 cylinder and guide rod rotation prevent and vacuum pipe.
- High-accuracy and high performance by applying of Ball Bearing for up and down motion
- Diversity of installations (3 directions)
- Positioning and shockproof function for workpiece with anti-shock cushion at the end of connector.
- Auto Switch for the detection of position can be attached
- Applicable to small-size work piece handling such as electric materials and semiconductor chips

## Order form

**PPU06B - 10 - CA2 - A2S**

①                      ②                      ③                      ④

④ Auto Switch type

Symbol	Type	Length	Applied quantity
A2S	DSC PRO-A2	1m	1 ea (Detect Up or Down)
A2LS	(2-wire)	3m	
B2S	PLC PRO-B2	1m	
B2LS	(3-wire)	3m	
Blank	Switch No		

※The allowable quantity for Auto Switch mounting is generally one.  
If you need to mount 2 switches, please contact to us.  
※For Auto switch for PPU06S-10, please contact to us.

- ① Series
- ② Stroke(mm) : 10, 20
- ③ Connector type

Symbol	Specification	Type
Blank	Direct type (Standard, CA1)	Ø6
CA2	Direct type	Ø3.2
CB1	Screw type	M5 Male
CB2		M3 Male
CC1		M5 Female
CC2		M3 Female

※Above connector only for PPU06B Series.

## Specification

Model		PPU06B	PPU06S
Bore size(mm)		6	6
Rod(mm)		3	3
Stroke(mm)		10, 20	10
Theoretical thrust(kgf) P : Air pressure(kgf/cm <sup>2</sup> )	Forward	0.28×P	0.28×P
	Backward	0.21×P	0.21×P
Air port size		M3	M3
Main body weight(kgf)		Stroke 10 : 0.04, Stroke 20 : 0.05	
Shock Absorbing stroke(mm)		3	1
Fluid		Clean air (Note 1)	
Air pressure(kgf/cm <sup>2</sup> )		1.5 ~ 7 (General resistance pressure: 9.2) (Note 2)	
Lubrication		No need (if need, use one sort of turbine oil: SPEC ISOVG 32)	
Temperature(°C)		5 ~ 60	
Motion type		Double-acting type	
Accuracy(mm)		± 0.01	
Guide type(mm)		Liner Guide	

Note 1) Clean air: Fresh air containing solid matters with 0.3% of supersaturated moisture and 99.9% of liquid oil that passed through the 3~10µm degree of filtering  
Note 2) Guaranteed capacity of resist pressure: A pressure that does not cause an abnormality in parts when it is applied for 1 minute without any weight loaded.